

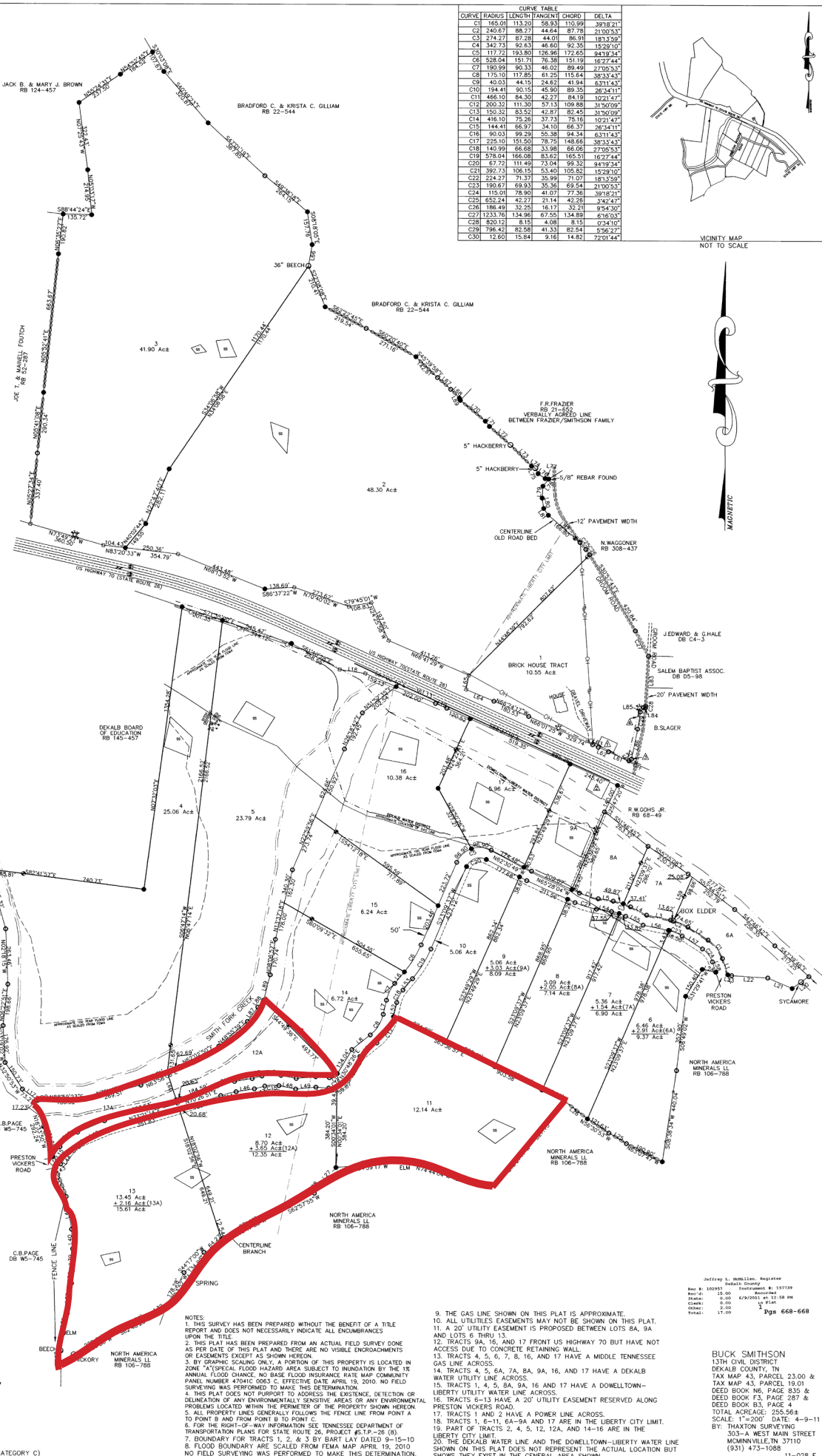
LINE	BEARING	DISTANCE
L1	N18°06'11"W	81.14
L2	N87°24'32"W	114.48
L3	N78°52'32"W	116.23
L4	N82°43'15"W	85.55
L5	N80°57'14"W	79.74
L6	S39°32'21"W	70.84
L7	S12°1'28"W	69.05
L8	S33°01'11"W	112.20
L9	N85°58'51"W	64.50
L10	S84°33'15"W	125.67
L11	N79°33'52"W	73.51
L12	S74°42'42"W	47.96
L13	S80°48'45"W	85.29
L14	S66°39'00"W	138.29
L15	S34°48'50"W	57.50
L16	S92°21'04"W	3.03
L17	N53°26'30"W	90.45
L18	S81°10'14"E	123.07
L19	S66°42'08"E	56.43
L20	S54°14'43"W	97.02
L21	N68°14'14"W	125.63
L22	N88°21'29"W	170.24
L23	N78°04'41"W	18.06
L24	N78°04'41"W	65.48
L25	N58°51'40"W	96.93
L26	S61°49'51"W	136.91
L27	S41°14'12"W	110.59
L28	S35°4'54"W	48.57
L29	S68°04'44"W	73.87
L30	S44°00'24"W	78.81
L31	S69°09'30"W	41.67
L32	S59°01'11"W	74.08
L33	S55°02'39"W	74.43
L34	N62°03'12"E	28.28
L35	N07°52'27"E	85.42
L36	N12°44'40"E	94.08
L37	N02°07'42"E	143.98
L38	N04°08'41"E	61.18
L39	N00°22'02"E	102.56
L40	N03°19'30"W	83.22
L41	N08°29'52"W	157.64
L42	N20°08'38"W	145.15
L43	N52°39'16"E	29.15
L44	N34°48'50"E	65.20
L45	N68°39'02"E	135.36
L46	N80°48'38"E	87.95
L47	N74°42'45"E	80.94
L48	S78°43'04"E	96.09
L49	N84°32'13"E	62.39
L50	S80°59'51"E	103.26
L51	N51°05'11"E	69.05
L52	N12°1'28"E	70.94
L53	N30°22'21"E	70.94
L54	S80°57'14"E	71.74
L55	S62°43'15"E	92.45
L56	S78°29'25"E	123.14
L57	S57°24'32"E	114.48
L58	S18°01'11"E	52.24
L59	N43°09'33"E	225.59
L60	N18°02'56"W	137.16
L61	N62°58'30"W	105.52
L62	N65°59'39"W	53.66
L63	N66°31'25"W	28.36
L64	N67°15'09"W	142.82
L65	N11°08'03"E	68.81
L66	S09°36'03"W	103.81
L67	S48°31'20"E	83.63
L68	S44°09'17"E	58.38
L69	S20°00'20"E	114.62
L70	S50°01'46"E	153.86
L71	S38°14'18"E	35.14
L72	S48°44'15"E	132.78
L73	S44°45'17"E	140.82
L74	S59°09'11"E	23.42
L75	S28°41'06"E	29.06
L76	S55°39'50"E	40.91
L77	S80°17'25"E	174.42
L78	S39°27'39"W	43.51
L79	S03°08'54"W	52.20
L80	S08°08'59"E	49.63
L81	S34°36'34"E	38.70
L82	S48°18'08"E	198.80
L83	S03°10'30"W	237.10
L84	N80°27'59"W	9.65
L85	S30°21'48"W	26.09
L86	S11°29'30"W	146.01
L87	N32°38'58"E	64.14
L88	N38°49'17"E	43.53
L89	N13°33'06"E	123.89
L90	S84°14'43"W	46.87

- TDOT DRAINAGE EASEMENTS**
- ▲ DRAINAGE EASEMENT RB 128-238-242
 - ▲ DRAINAGE EASEMENT RB 128-238-242
 - ▲ DRAINAGE EASEMENT RB 128-238-242
 - ▲ DRAINAGE EASEMENT RB 128-238-242

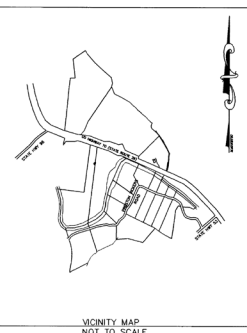
- LEGEND**
- IRON PIN FOUND
 - IRON PIN SET
 - REF. IRON PIN SET
 - POINT NEITHER SET NOR FOUND
 - CONC. MON. FOUND
 - TREE (AS NOTED)
 - ROCK FENCE
 - POWER POLE
 - OVERHEAD UTILITIES
 - EXISTING FIRE HYDRANT
 - CONCRETE RETAINING WALL
 - WATER SHUTOFF
 - BLOW OFF VALVE
 - SS SILE SITE



NOTE: ERROR OF CLOSURE 1:5,000 (CATEGORY C)



CURVE	RADIUS	LENGTH	TANGENT	CHORD	DELTA
C1	165.01	113.20	58.93	110.99	39°18'21"
C2	240.67	88.27	44.64	87.78	21°02'53"
C3	274.27	87.28	44.01	86.91	18°13'50"
C4	342.73	92.63	46.80	92.35	15°29'10"
C5	1172.72	103.80	126.96	172.65	84°19'34"
C6	528.04	151.71	76.38	151.99	40°27'44"
C7	190.99	90.33	46.02	89.49	27°05'53"
C8	175.10	117.85	61.25	115.64	38°33'43"
C9	40.03	44.15	24.62	41.94	63°11'42"
C10	194.41	90.15	45.90	89.35	28°34'11"
C11	468.10	84.30	43.27	84.10	10°21'42"
C12	200.32	111.30	57.13	109.88	31°50'09"
C13	150.52	83.52	42.97	82.45	31°00'09"
C14	416.10	75.26	37.73	75.16	10°21'42"
C15	144.41	66.97	34.10	66.37	26°34'11"
C16	90.33	99.29	50.15	99.54	31°50'09"
C17	225.10	151.50	78.75	148.64	38°33'43"
C18	140.99	66.68	33.98	66.06	27°05'53"
C19	578.04	166.08	83.62	165.51	40°27'44"
C20	67.72	111.49	73.04	99.33	84°19'34"
C21	592.73	108.15	54.07	105.56	10°21'42"
C22	224.27	71.37	35.99	71.01	18°13'50"
C23	190.67	69.93	35.36	69.54	21°02'53"
C24	115.01	78.90	41.07	77.36	39°18'21"
C25	852.24	42.27	21.14	42.28	34°24'27"
C26	186.49	32.25	16.17	32.21	9°54'30"
C27	1233.76	134.96	67.50	134.89	6°10'03"
C28	820.12	8.15	4.08	8.15	0°34'10"
C29	796.43	82.58	41.33	82.54	2°56'22"
C30	12.80	15.84	9.16	14.82	23°01'44"



9. THE GAS LINE SHOWN ON THIS PLAT IS APPROXIMATE.
10. ALL UTILITIES EASEMENTS MAY NOT BE SHOWN ON THIS PLAT.
11. A 20' UTILITY EASEMENT IS PROPOSED BETWEEN LOTS 8A, 9A AND LOTS 6 THRU 13.
12. TRACTS 9A, 15, AND 17 FRONT US HIGHWAY 70 BUT HAVE NO ACCESS DUE TO CONCRETE RETAINING WALL.
13. TRACTS 4, 5, 6, 7, 8, 16, AND 17 HAVE A MIDDLE TENNESSEE GAS LINE ACROSS.
14. TRACTS 4, 5, 6A, 7A, 8A, 9A, 16, AND 17 HAVE A DEKALB WATER UTILITY LINE ACROSS.
15. TRACTS 1, 4, 5, 8A, 9A, 16 AND 17 HAVE A DOWELLTOWN-LIBERTY UTILITY WATER LINE ACROSS.
16. TRACTS 6-13 HAVE A 20' UTILITY EASEMENT RESERVED ALONG PRESTON VICKERS ROAD.
17. TRACTS 1 AND 2 HAVE A POWER LINE ACROSS.
18. TRACTS 1, 6-11, 14-19A AND 17 ARE IN THE LIBERTY CITY LIMIT.
19. PART OF TRACTS 2, 4, 5, 12, 12A, AND 14-16 ARE IN THE LIBERTY CITY LIMIT.
20. THE DEKALB WATER LINE AND THE DOWELLTOWN-LIBERTY WATER LINE SHOWN ON THIS PLAT DOES NOT REPRESENT THE ACTUAL LOCATION BUT SHOWS THEY EXIST IN THE GENERAL AREA SHOWN.

Jeffrey L. Milliken, Registered Professional Surveyor
 No. 15719
 State of Tennessee
 Date: 06/29/2011 at 10:50 AM
 Scale: 1" = 400'
 Sheet: 1 of 1
 Pgs 668-668

BUCK SMITHSON
 13TH CIVIL DISTRICT
 DEKALB COUNTY, TN
 TAX MAP 43, PARCEL 23.00 &
 TAX MAP 43, PARCEL 19.01
 DEED BOOK 93, PAGE 835 &
 DEED BOOK 93, PAGE 287 &
 DEED BOOK 93, PAGE 4
 TOTAL ACRES: 255.564
 SCALE: 1"=200' DATE: 4-9-11
 BY: THAXTON SURVEYING
 303-S WEST MAIN STREET
 McMINNVILLE, TN 37110
 (931) 473-1088